

DELEGATE
INVITE



ECDF
EARLY CHILDHOOD DEVELOPMENT FORUM



ICSN
INTERNATIONAL CHRISTIAN SCHOOL
NONTHABURI

**GLOBAL EDUCATORS
CONFERENCE AND
EDU TOUR
THAILAND 2023**



SUPPORT PARTNERS



SUPPORT PARTNERS



 **SISU SCHOOLS**
whatever it takes!

 **CCE**
COUNCIL FOR CREATIVE EDUCATION

 **Pedagog**
FOUNDATION

23rd - 25th
November
2023



In association with




PRESENTS

BUILDING BRIDGES : THE POWER OF PARTNERSHIP IN EARLY CHILDHOOD DEVELOPMENT

CONFERENCE | EDU TOUR | THAILAND



 International Christian School, Nonthaburi, Thailand

MORE INFOS :

REGISTRATION

✉ ecdfinfo2019@gmail.com

PAPER READING

✉ ecdfad@gmail.com

☎ 9864039655 | 7896887051



Support Partners



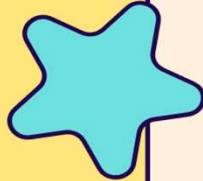
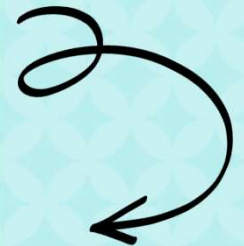
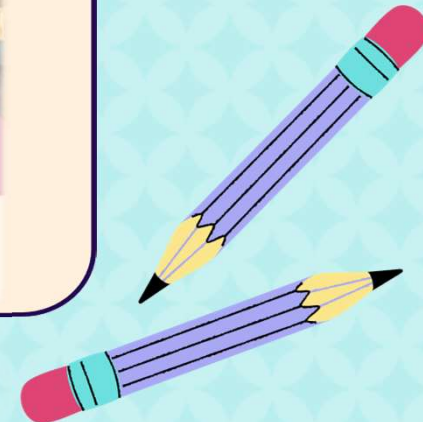
ecd_forum



ecdforum



earlyforum



EVENT OVERVIEW

Theme: Building Bridges ~The Power of
Partnership in Early Childhood Development

Date : 23rd - 25th November 2023

📍 Conference Venue: International Christian
School, Nonthaburi, Thailand



SUPPORT PARTNERS:



ABOUT THE EVENT



In Collaboration with



The Global Educators Conference and Edu Tour aim to combine the expertise and passion of International schools in Nonthaburi, Thailand, and ECDF in the field of early childhood education. By promoting knowledge sharing, holistic approaches, multicultural competence, and innovative strategies, the event seeks to enhance the quality of education for young children. Through this collaboration, we aim to make a positive global impact on early childhood education and empower educators to provide the best learning experiences for children.

WHY ATTEND?



- **Foster Knowledge Exchange:** Create a platform for educators and professionals to share their knowledge, research findings, and best practices in Early Childhood Education.
- **Promote Holistic Education:** Explore strategies that encompass cognitive, social-emotional, physical, and creative aspects, empowering educators to nurture well-rounded learners.
- **Cultivate Multicultural Competence:** Emphasize the importance of cultural sensitivity and inclusivity in Early Childhood Education, creating inclusive learning environments.
- **Explore Innovative Approaches:** Showcase and discuss innovative approaches, technologies, and methodologies in Early Childhood Education, inspiring creativity and effectiveness.
- **Enhance Assessment and Evaluation Practices:** Explore various assessment methods and tools addressing ethical considerations and challenges in assessing young learners.
- **Facilitate Collaboration and Networking:** Encourage collaboration and networking among educators, professionals, institutions, and organizations in Early Childhood Education.



DELEGATE FEE AND INCLUSIONS



DELEGATES
TRAVELLING
WITH ECDF

Conference fee
&
Inclusions:

- 650 USD (approx.)
- 54,000 INR (approx.)

- Accommodation in 3-star / equivalent
- Breakfast & Lunch and 1 Dinner Cruise
- Conference Ticket
- School Tour/ Study Tour
- Certification from ECDF & ICSN
- Transportation



DELEGATE FEE AND INCLUSIONS



EDU TOUR-ONLY
ATTENDANCE
ALL 3 DAYS
23RD TO 25TH NOV

Conference fee
&
Inclusions:

- 200 USD (approx.)
- 17,000 INR / 6000 THB

- Edu Tours – School Tour/ Study Tour
- Conference Ticket
- Certification from ECDF & ICSN
- Lunch



DELEGATE FEE AND INCLUSIONS



CONFERENCE

Conference fee
&
Inclusions:

- 125 USD (approx.)
- 10,300 INR / 4300 THB

- Conference Ticket
- Certification from ECDF & ICSN
- Lunch



SPEAKER SLOT/AWARD/ PAPER PRESENTATION



Speaker Slot Paper Reading	→	☐ 65 USD/ 5400 INR/ 2300 THB
	→	☐ 65 USD/ 5400 INR/ 2300 THB
Award Nomination	→	☐ 65 USD/ 5400 INR/ 2300 THB

ECDF GLOBAL PINNACLE EDUCATION AWARDS
(4th edition)

For more details write to: ecdfinfo2019@gmail.com

about ECDF



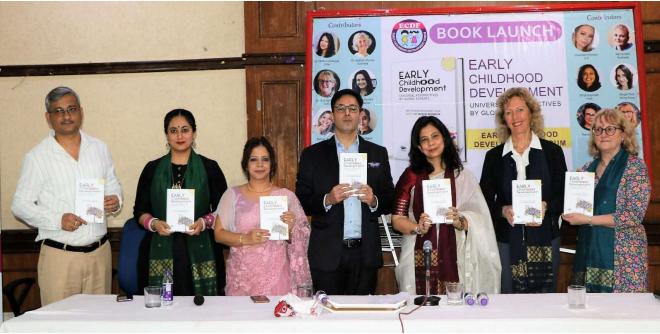
ECDF (Early Child Development Forum) is an initiative of the Debendra Nath Acharya Foundation for Children and Women Welfare (DNAF). DNAF launched ECDF in October 2019 with the aim of empowering individuals from all walks of life and fostering a nurturing environment for children during their early years. With active chapters both in India and overseas, ECDF has garnered a global membership of over 5,000 individuals.

ECDF endeavors to work towards empowering children from all cross sections of society and creating a bonhomous environment for children in their early childhood years so that they grow up to be sensible, happy, and confident individuals. The ECDF family believes that it can be done only if all the stakeholders work in a synchronized way toward this goal.





ECDF event - DELHI 2023



about ICSN



ICSN is a private, Christian international school that serves students from Preschool (K1) through Grade 12 with an education based on standards set forth by American Education Reaches Out (AERO) in alignment with the Key to Learning program and the US Common Core State Standards (CCSS). We strongly believe in educating the whole child by developing their academic and cognitive skills, physical abilities, social and emotional intelligence, and moral values. We believe that the ideal is for committed teachers and dedicated parents to work together to be the strong foundation of a vibrant school community that raises up children who are responsible, global citizens.



ICSN

INTERNATIONAL CHRISTIAN SCHOOL
NONTHABURI



Our Partner EUROPEAN INTERNATIONAL UNIVERSITY



European International University (EIU) is a prestigious institution known for its academic excellence and global connectivity. Located in Europe, it offers diverse undergraduate, postgraduate, and doctoral programs. EIU prioritizes internationalization, fostering a multicultural environment and promoting cross-cultural interactions. The university emphasizes cutting-edge research, innovation, and partnerships with prestigious institutions worldwide. With modern facilities and a commitment to student development, EIU prepares graduates to excel in their careers and become global citizens.

Our Partner

CRESCENT
INTERNATIONAL
SCHOOL



Crescent International School was established in 2008 with the aim to produce multicultural students honed with talents and skills to create a happy learning environment that gives them the freedom to think and choices later in life. The initial project of the school was started under the Crescent Educational Foundation through the collaborative efforts of a group of generous people. The school started its operation in the first quarter of the academic year of 2008 with 150 students of different nationalities and 18 dedicated and committed educators housed in the heart of Bangkok. 13 years on, the school continues to grow in both student population and academic excellence. One of the lasting goals of the institution is to better serve the needs of our young population, irrespective of race, creed, religious orientation, and beliefs.

Our Partners

CCE Finland and SISU School



Council for Creative Education (CCE) Finland is a global organization originating from Tampere, Finland, with the motto of redefining education through creativity. We provide tailor-made teacher training and school development programs – from pre-primary to higher education. Our programs are based on research and expertise from Finnish universities and academia. We provide insights into the Finnish education system through educational tours and student camps by which the participants understand how creativity is blended well within the Finnish classroom and curriculum. SISU Schools and Preschools is a Finnish curriculum-based K-12 school designed by CCE Finland and operational across South Korea, Taiwan, and India. SISU Box is a research-based pedagogical solution for preschool owners and teachers to implement the Finnish preschool curriculum with Play N Fun Learning.

Along with Finland, CCE operates in MEA, Nigeria, America, Australia, and Asia with our collaborators and network. Team CCE Finland has already served customers and educators from more than 35 countries.

SISU school is an international, research-based organization authorized by the Council for Creative Education. The concept is designed by early childhood education experts, architecture professionals, and leadership experts from Finland. We want to globalize the Sisuvay of life through early childhood education centers with a simple licensing process and easy-to-implement guidelines. This is possible through our unique combination of well-adapted curriculum, high-class teacher training, carefully chosen teaching aids, pedagogically designed activities, and easy-to-use ICT tools for everyday school life.

With our collaborators and partners, we are continuously developing new methods and tools for teaching and learning on the basis of contemporary research in the field of Early Childhood education. Our parent organization, Council for Creative Education has excellent experience in the field of Early childhood education which is the base for SISU schools.

Our Partner

PEDAGOG



PEDAGOG is the world's first blockchain-powered online education platform. Their goal is to make learning fun and rewarding. That's why we're looking to provide their students with token-based scholarships and game-like experiences while learning. Pedagog's mission is to create new possibilities for people and organizations everywhere. Their global marketplace features an extensive, multi-language library, which includes thousands of courses taught by real-world experts. You can take courses across a wide range of categories, some of which include: business & entrepreneurship, programming, academics, the arts, health & fitness, language, music, and much more!

Our Partner Tender Petals



Tender Petals Preschool is a part of Inner I Foundation Pvt. Ltd. (IIFPL), a company focused on spreading the Light of Knowledge through quality education. The preschool's mission is to provide a holistic education based on a multi-disciplinary approach, creating happy learners who are ready to explore and evolve. Launched in 2013, Tender Petals has grown to be a renowned name in early childhood education, offering preschools, daycare, and activity centre services. Tender Petals has been featured in the FORBES INDIA edition of the GREAT INDIAN PRESCHOOLS in 2019-20.



thank you!

Reach Us:

E-Mail: ecdfinfo2019@gmail.com

ecdfad@gmail.com

Website: www.ecdforum.org

www.icsn.chrs.fr

+91 98640 39655/ +91 93238 52999

